

Teach-in lathes - PADOVANI - LABOR 255 - MACH-ID 6004



Teach-in lathes - PADOVANI - LABOR 255

MACH-ID 6004

Make PADOVANI
Type LABOR 255
Year 1980



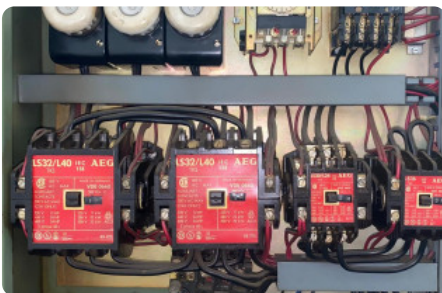
Specifications

DBC Turning Length	78.74 inch
Swing over bed Ø	20.079 inch
Swing over cross slide Ø	12.913 inch
Spindle bore	3.228 inch
Speeds / ranges	1500 Rpm
Spindle power	7.5 kW
Tailstock spindle Ø	75 Ø
Spindle taper	5 Mk
Power	7.5 kW



Dimensions

Length	137.795 inch
Width	59.055 inch
Height	59.055 inch
Weight	6175.7 lbs



Please Note: The information on this page has been obtained to the best of our ability and belief, and from the manufacturers where possible. It is given in good faith, but its accuracy can not be guaranteed. Accordingly, it will not form a part of any contract and shall not constitute contractual terms. We advise you to check any vital details!



Transito 21
 6909 DA Babberich
 51.9066195, 6.14990950

E: info@mach4metal.com
 E: sales@mach4metal.com
 E: buy@mach4metal.com

T: +31 (0)316 247 123
 F: +31 (0)316 247 123
 W: www.mach4metal.com

f www.facebook.com/Mach4Metal/
 t twitter.com/mach4metal

