

## Teach-in lathes - PADOVANI - LABOR 255 - MACH-ID 6004



### Teach-in lathes - PADOVANI - LABOR 255

**MACH-ID 6004**

**Make** PADOVANI  
**Type** LABOR 255  
**Year** 1980



#### Specifications

**DBC Turning Length** 2000 mm

**Swing over bed Ø** 510 mm

**Swing over cross slide Ø** 328 mm

**Spindle bore** 82 mm

**Speeds / ranges** 1500 Rpm

**Spindle power** 7.5 kW

**Tailstock spindle Ø** 75 Ø

**Spindle taper** 5 Mk

**Power** 7.5 kW



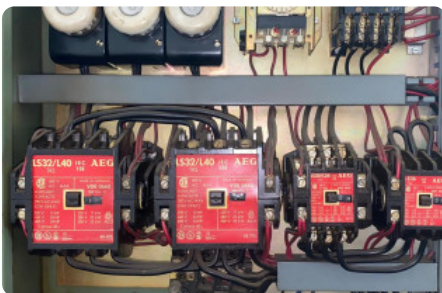
#### Dimensions

**Length** 3500 mm

**Width** 1500 mm

**Height** 1500 mm

**Weight** 2800 kg



Please Note: The information on this page has been obtained to the best of our ability and belief, and from the manufacturers where possible. It is given in good faith, but its accuracy can not be guaranteed. Accordingly, it will not form a part of any contract or constitute contractual terms. We advise you to check any vital details!



Transito 21  
 6909 DA Babberich  
 51.9066195, 6.14990950

**T:** +31 (0)316 247 123  
**F:** +31 (0)316 247 123  
**W:** [www.mach4metal.com](http://www.mach4metal.com)

**E:** [info@mach4metal.com](mailto:info@mach4metal.com)  
**E:** [sales@mach4metal.com](mailto:sales@mach4metal.com)  
**E:** [buy@mach4metal.com](mailto:buy@mach4metal.com)

**f** [www.facebook.com/Mach4Metal/](https://www.facebook.com/Mach4Metal/)  
**t** [twitter.com/mach4metal](https://twitter.com/mach4metal)

