



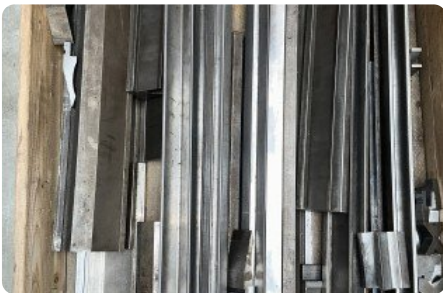
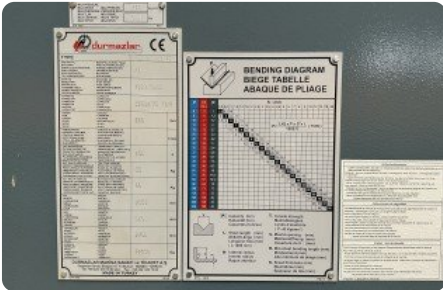
Pressbrakes - DURMA - AD-R 30175 - MACH-ID 7111



Pressbrakes - DURMA - AD-R 30175

MACH-ID 7111

Make DURMA
Type AD-R 30175
Year 2011
Control DELEM DA-56



Specifications

Max. bending length	3050 mm
Max. pressing force	175 T
Troth beam	450 mm
Number of controlled axis	4
Distance between column	2600 mm
Dis. Beam - Table	530 mm
Beam stroke	265 mm
Table Width	104 mm
Approch speed	160 mm/min.

Dimensions

Length	4250 mm
Width	1800 mm
Height	2850 mm
Weight	10900 kg

Please Note: The information on this page has been obtained to the best of our ability and belief, and from the manufacturers where possible. It is given in good faith, but its accuracy can not be guaranteed. Accordingly, it will not form a rep constitute contractual terms. We advise you to check any vital details!



Transito 21
6909 DA Babberich
51.9066195, 6.14990950

T: +31 (0)316 247 123
F: +31 (0)316 247 123
W: www.mach4metal.com

E: info@mach4metal.com
E: sales@mach4metal.com
E: buy@mach4metal.com

f www.facebook.com/Mach4Metal/
t twitter.com/mach4metal

