



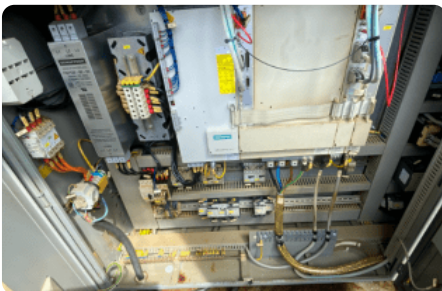
## CNC Lathes - GILDEMEISTER - CTX 500 - MACH-ID 7075



### CNC Lathes - GILDEMEISTER - CTX 500

#### MACH-ID 7075

**Make** GILDEMEISTER  
**Type** CTX 500  
**Year** 2001  
**Control** MAZATROL 640T NEXUS



#### Specifications

|                  |             |
|------------------|-------------|
| Max. turning Ø   | 16.535 inch |
| Y-Axis           | 5.984 inch  |
| Z-Axis           | 63.268 inch |
| Spindle bore     | 4.016 inch  |
| Speedrange       | 3300 Rpm    |
| X-Axis           | 10.118 inch |
| Spindle power    | 30 kW       |
| ATC / revolver   | 12          |
| Speed live tools | 4000 Rpm    |

#### Dimensions

|        |              |
|--------|--------------|
| Length | 197.637 inch |
| Width  | 86.614 inch  |
| Height | 74.803 inch  |
| Weight | 16542.2 lbs  |

Please Note: The information on this page has been obtained to the best of our ability and belief, and from the manufacturers where possible. It is given in good faith, but its accuracy can not be guaranteed. Accordingly, it will not form a part of any contract and shall not constitute contractual terms. We advise you to check any vital details!



Transito 21  
6909 DA Babberich  
51.9066195, 6.14990950

T: +31 (0)316 247 123  
F: +31 (0)316 247 123  
W: [www.mach4metal.com](http://www.mach4metal.com)

E: [info@mach4metal.com](mailto:info@mach4metal.com)  
E: [sales@mach4metal.com](mailto:sales@mach4metal.com)  
E: [buy@mach4metal.com](mailto:buy@mach4metal.com)

f [www.facebook.com/Mach4Metal/](https://www.facebook.com/Mach4Metal/)  
t [twitter.com/mach4metal](https://twitter.com/mach4metal)

