



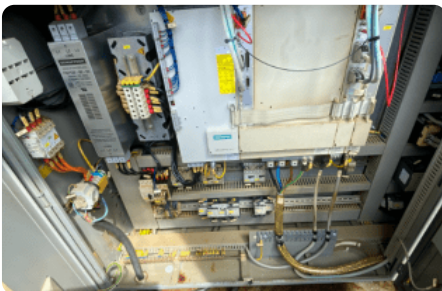
CNC Lathes - GILDEMEISTER - CTX 500 - MACH-ID 7075



CNC Lathes - GILDEMEISTER - CTX 500

MACH-ID 7075

Make GILDEMEISTER
Type CTX 500
Year 2001
Control MAZATROL 640T NEXUS



Specifications

Max. turning Ø	420 mm
Y-Axis	152 mm
Z-Axis	1607 mm
Spindle bore	102 mm
Speedrange	3300 Rpm
X-Axis	257 mm
Spindle power	30 kW
ATC / revolver	12
Speed live tools	4000 Rpm

Dimensions

Length	5020 mm
Width	2200 mm
Height	1900 mm
Weight	7500 kg

Please Note: The information on this page has been obtained to the best of our ability and belief, and from the manufacturers where possible. It is given in good faith, but its accuracy can not be guaranteed. Accordingly, it will not form a part of any contract and does not constitute contractual terms. We advise you to check any vital details!



Transito 21
6909 DA Babberich
51.9066195, 6.14990950

T: +31 (0)316 247 123
F: +31 (0)316 247 123
W: www.mach4metal.com

E: info@mach4metal.com
E: sales@mach4metal.com
E: buy@mach4metal.com

f www.facebook.com/Mach4Metal/
t twitter.com/mach4metal

